



Center on the Developing Child
HARVARD UNIVERSITY

Connecting Early Childhood Development and Lifelong Health in a COVID-19 World

JACK P. SHONKOFF, M.D.

Julius B. Richmond FAMRI Professor of Child Health and Development,
Harvard Graduate School of Education & Harvard T.H. Chan School of Public Health.
Professor of Pediatrics, Harvard Medical School & Boston Children's Hospital.
Research Staff, Massachusetts General Hospital.
Director, Center on the Developing Child at Harvard University.

Protecting Our Children: COVID-19's Impact on Early Childhood and ACEs
NICHM Foundation Webinar | September 10, 2020



@HarvardCenter



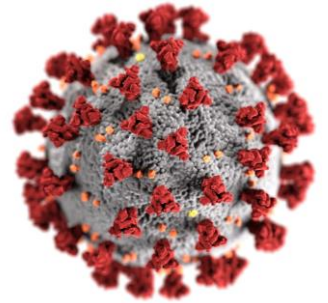
@CenterDevelopingChild



@DevelopingChildHarvard

COVID-19 Through an Early Childhood Lens

Disparities associated with poverty, racism, and other structural inequities are not new—but striking variations in susceptibility to illness and response to treatment underscore the differential impacts of adversity on health.

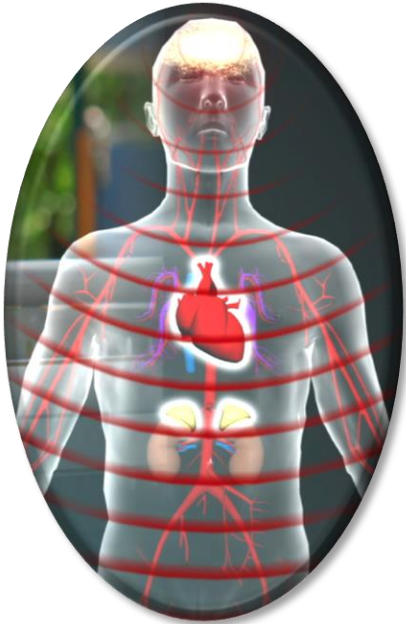


The health and well-being of young children is inextricably tied to the health and well-being of the adults who care for them.

Pre-existing medical conditions that impose the highest risk for adults are associated with greater adversity early in life.

21st-Century Science is Deepening our Understanding About the Origins of Disparities in Early Development and Lifelong Health

Connecting the Brain to the Rest of the Body



Variation in Sensitivity to the Environment



Timing & Critical Periods



The Biology of Adversity and Resilience Explains How Excessive Stress Can Undermine the Foundations of Healthy Development



Genetic
Variation

X

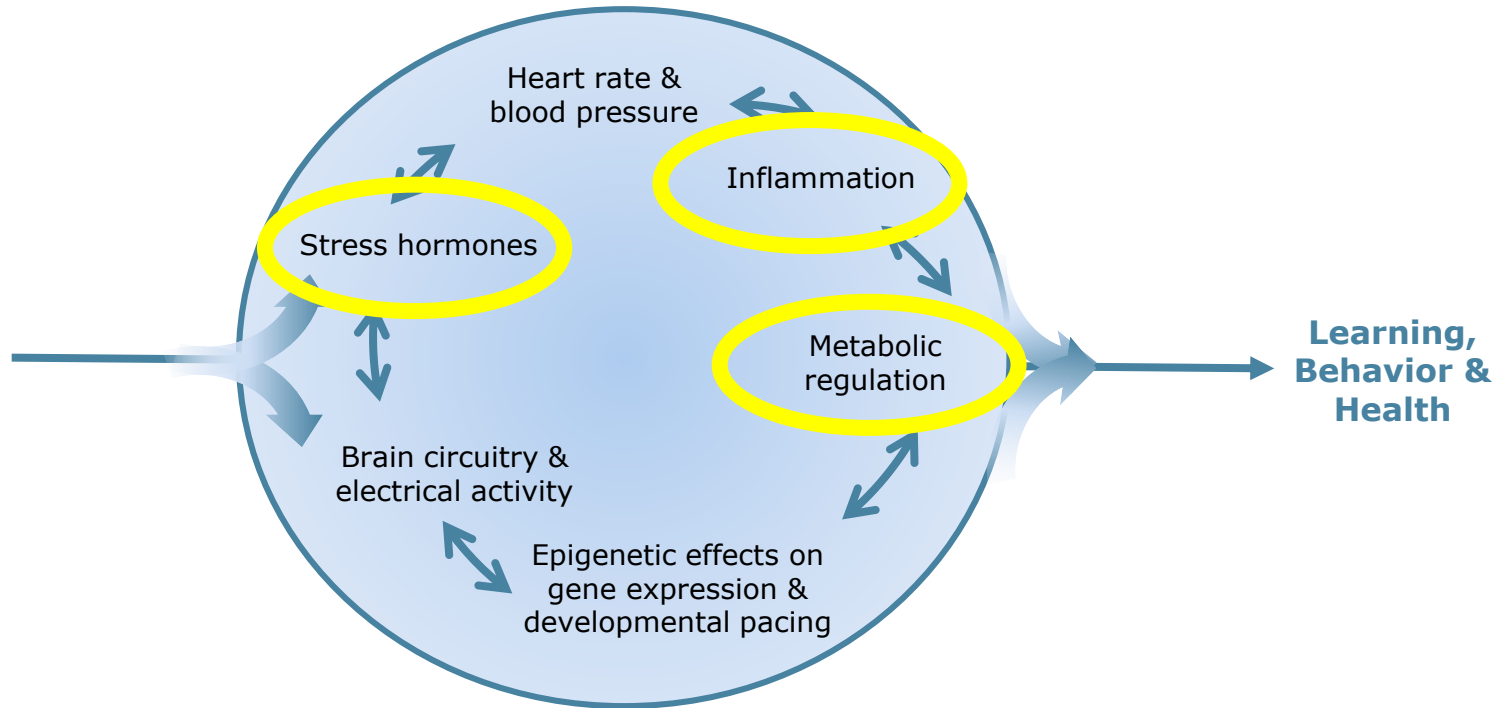


Environmental
Stressor

X

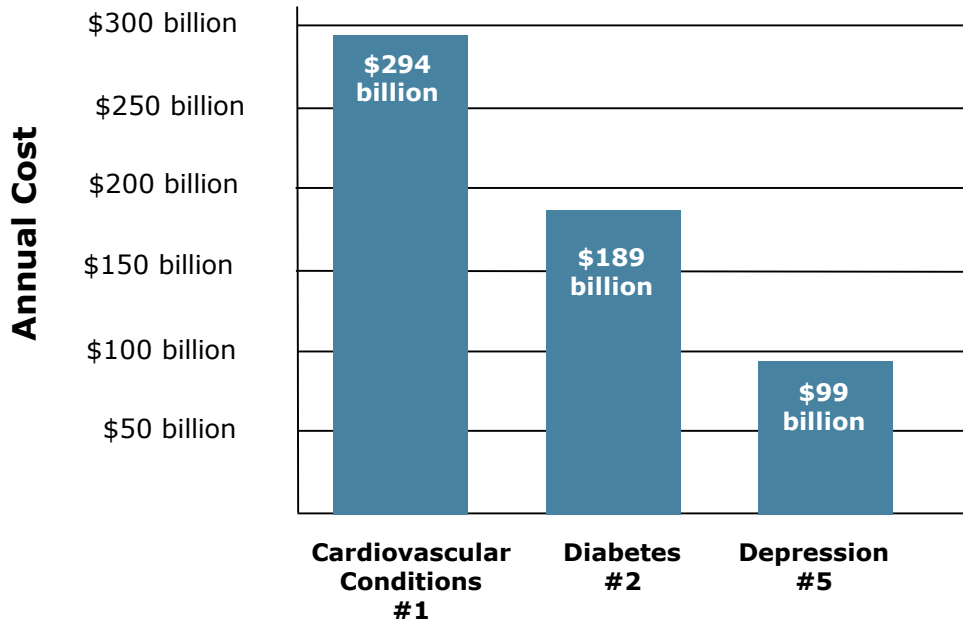


Time



Early Childhood Investments that Protect Biological Systems from Toxic Stress Will Generate a Larger ROI

3 of the 5 Most Costly Adult Diseases are Associated with Early Life Adversity

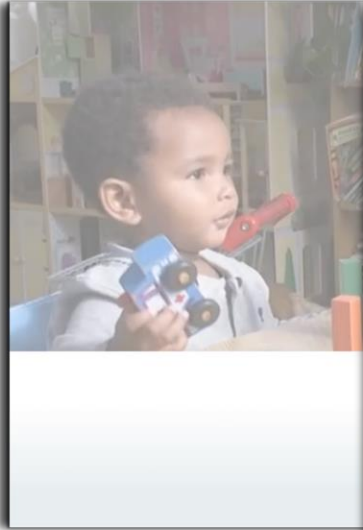


Take-Home: Science-informed investments that reduce hardships and adverse exposures faced by pregnant women and families raising young children offer a promising pathway to enormous savings in health care costs.

Sources: Waters, Graf (Milken Institute, 2018); Greenberg et al. (2015)



Center on the Developing Child HARVARD UNIVERSITY



The Brain and Motivation

Experiences Create Different Pathways

Hover over the labels on the brain regions or the highlighted text below to learn more about the role each plays in reward and motivation.

- Experiences trigger neurons (brain cells) in certain regions of the brain to send chemicals to other neurons in different regions.
- Repeated experiences create different pathways in the brain that link those experiences to thoughts, memories, and behaviors.
- These linked pathways create powerful associations between what we do and the memories of how that made us feel physically and emotionally, and that drives our behavior.
- We are motivated to repeat those experiences that made us feel good, and to avoid those that

IDEAS Impact Framework Training

Reimagining Program Development and Evaluation

What will this training do for me?

Since 2016, the IDEAS Impact Framework Training has helped people in a critical skills and knowledge. The training is ideal for anyone involved in the implementation, or evaluation of programs for children and families who to how to go beyond the best of what the field has achieved so far. Past participants have learned how to:

- improve the impact of their interventions,
- understand the underlying mechanisms of an intervention by co-creating an evaluation plan with multiple stakeholders,
- identify programs with the greatest potential to impact kids and families facing adversity,
- redefine how they evaluate program effectiveness, and
- orient their businesses around impact and reach.

What does the agenda include?

- Opening Presentation: [Three Principles to Increase Outcomes for Children](#)
This presentation will cover three design principles that we can use to improve policies and programs for children and families.
- An Overview of the [IDEAS Impact Framework](#)
An introduction to the Framework designed to help innovators overcome barriers and go beyond the status quo to increase impact.
- IDEAS Impact Framework Co-Design
[Theory of Change](#)

NATIONAL SCIENTIFIC COUNCIL ON THE DEVELOPING CHILD

Connecting the Brain to the Rest of the Body: Early Childhood Development and Lifelong Health Are Deeply Intertwined

WORKING PAPER 15

15

Center on the Developing Child HARVARD UNIVERSITY

www.developingchild.harvard.edu

