

Partnering to Improve Population Health

Anne De Biasi, MHA

Director of Policy Development, TFAH

NIHCM Webinar

February 11, 2014

Overview

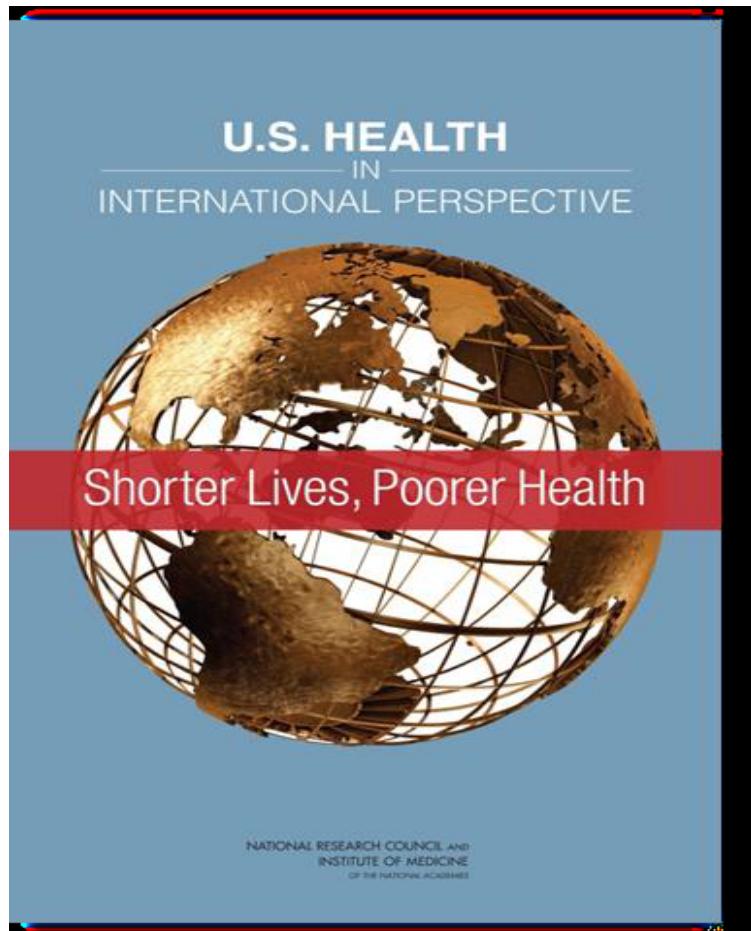
- About Trust for America's Health (TFAH)
- Key health challenges require a new way of thinking
- ACA and health delivery/financing changes compel new partnerships to improve health
- Health plan/community partnerships can address the social determinants of health

About TFAH: Who We Are

Trust for America's Health (TFAH) is a non-profit, non-partisan organization dedicated to saving lives by protecting the health of every community and working to make disease prevention a national priority.

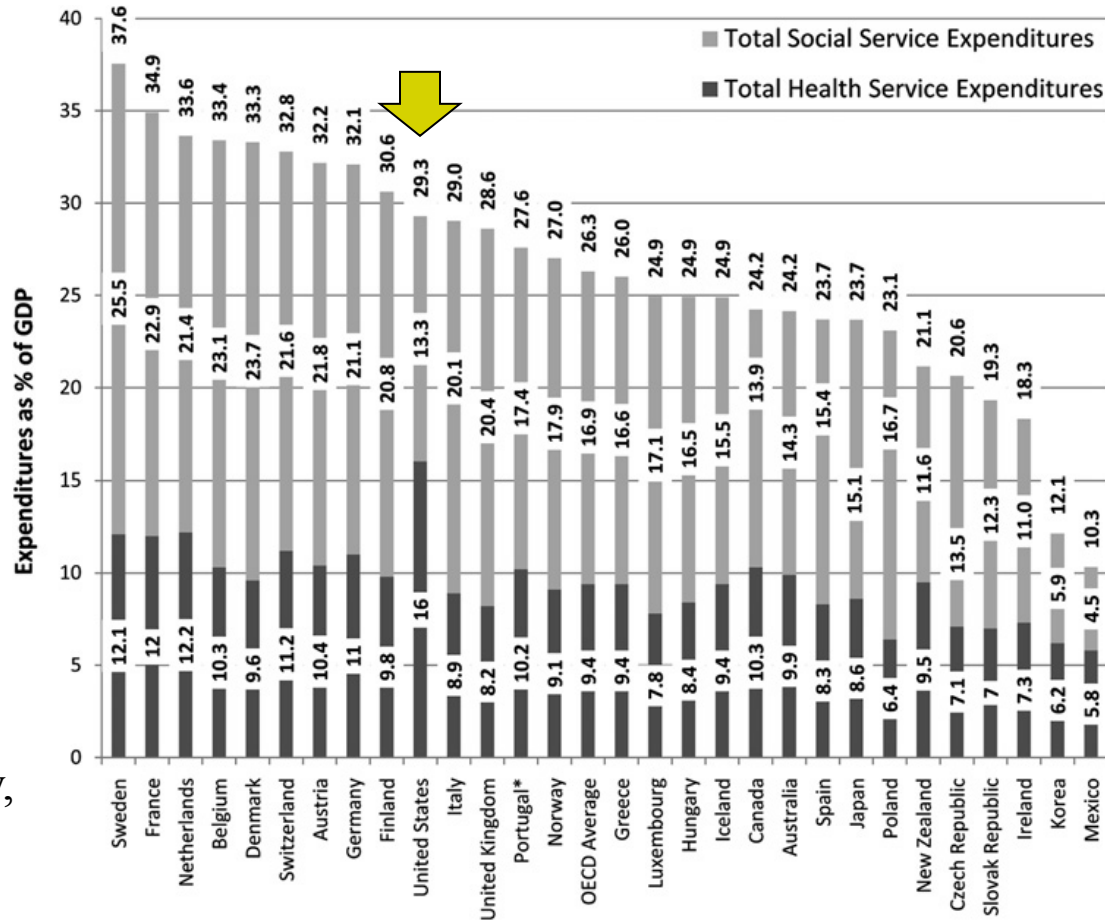


Status Quo is NOT an Option



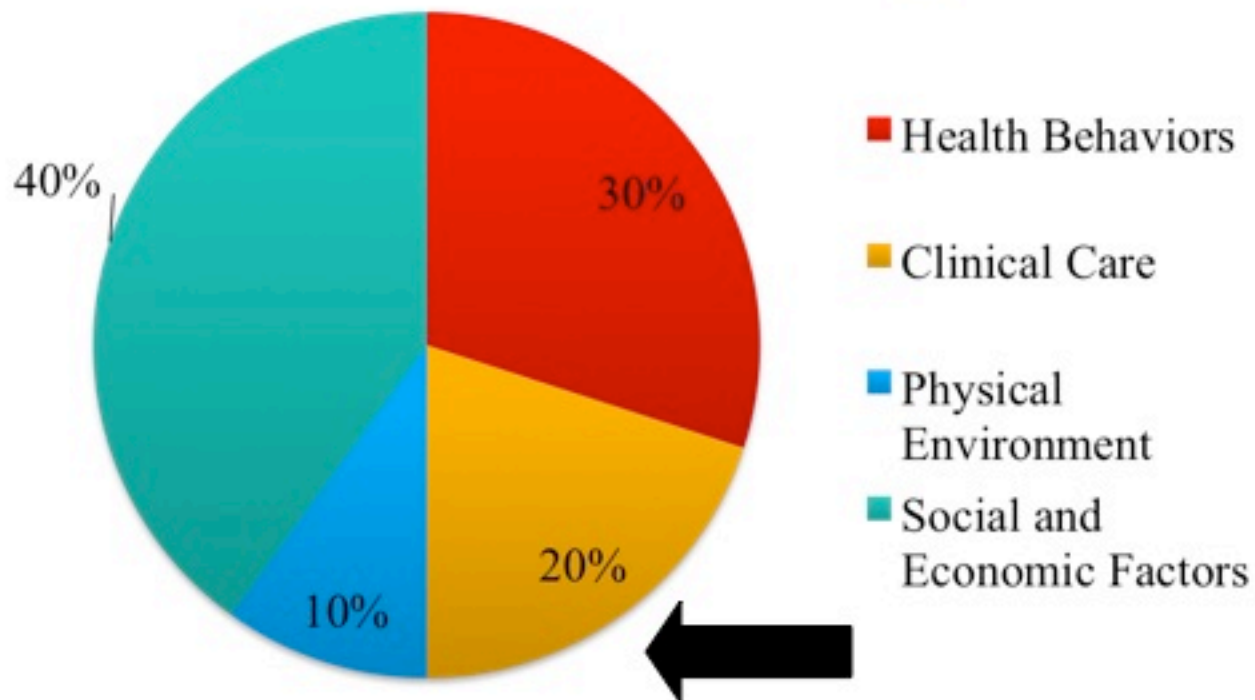
- NCD mortality rate (16/17)
- CD mortality rate (14/17)
- Last in life expectancy
- Youth least likely to survive to 50
- Highest level of income inequality; poverty; child poverty
- Third lowest rate of pre-school education and secondary school completion

Spending on Health and Social Services



Source: Bradley, et al. BMJ Qual Saf

Why is Spending on Social Services so Important?

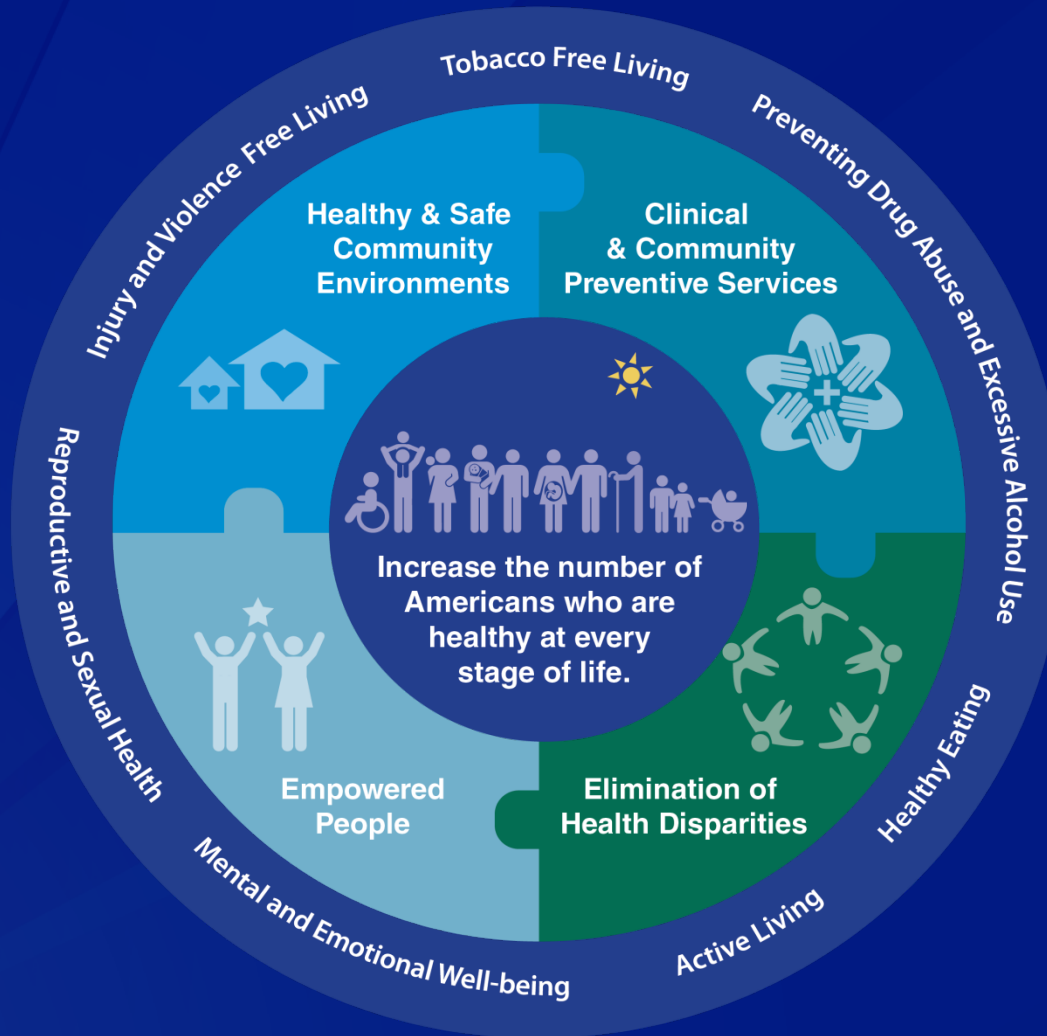


Source: Booske, B., Atherns, J., Kindig, D., Park H., Remington, P. (Feb. 2010) Different Perspectives for assigning weights to determinants of health. *County Health Rankings Working Paper*.

Healthier America 2013

- Partnerships across health and non-health sectors to improve health and reduce disparities
- Partnerships within the health sector to increase focus on population health in a reforming health system
- Restructure federal public health programs to reflect new partnerships and new roles in a post-ACA world

National Prevention Strategy



The Prevention & Public Health Fund

- ❑ Community Transformation Grants (CTG)
- ❑ Racial and Ethnic Approaches to Health (REACH)
- ❑ Tobacco Prevention, Quitlines, National Media Campaign
- ❑ Coordinated core chronic disease funding for state health departments
- ❑ CDC state grants for Nutrition, Physical Activity, and Obesity (NPAO)
- ❑ Chronic Disease Self Management
- ❑ Clinical Preventive Research
- ❑ And much more...

Physicians Support Addressing Social Needs

- Physicians (2011 Harris Interactive Survey of PCPs and Pediatricians for RWJF)
 - 85% say patients' social needs are as important to address as their medical conditions
 - 87% say problems created by unmet social needs are problems for everyone, not just low-income
 - 76% wish the health care system would pay for costs associated with connecting patients to services that address their social needs

Embrace *all* Definitions of “Population Health”

- Population health concept is driving all to think about outcomes, not process
- Covers everything from a patient panel to an entire geographic community
- Achieving health outcomes for *any* definition of “population” requires *partnering* with others with a *different* definition

Partnering to Improve Population Health

Common principles of successful partnerships:

- Identify a common goal & initial issue to focus on;
- Restructure or realign existing funding mechanisms, including across organizations and government agencies
- Provide financial incentives such as a method for shared savings
- Share access to data to identify problems and measure achievements
- Establish an “integrator”



Partner with Public and Private Health Care Payers

- Expand coverage of preventive services
 - Evidence based screenings & counseling
 - Routine immunizations
 - Preventive services for children and youth
 - Preventive services for women
 - Preventive coverage in Medicare

Partner with Public and Private Health Care Payers, cont.

- Expand coverage of community prevention programs
 - Recent Medicaid EHB rule change to allow reimbursement for non-licensed providers
 - Waivers and other CMS authorities to pay for additional covered services, or to pay additional entities, or for services in non-traditional setting
 - MA Pediatric Asthma 1115 Waiver
 - Diabetes Prevention Program
 - TX 1115 Waiver
 - Coverage of tobacco quit lines in Medicaid

Partner with Public and Private Health Care Payers, cont.

- Incorporate prevention within payment and delivery reform transformation
 - CMMI HCIA, SIM
 - Pioneer ACO next round?
- Investment from other sectors to address social determinants (e.g., housing, vocational counseling)

Health Plans Add Value to Partnerships

- Data (including to measure ROI)
- Analytical tools – predict risk, hot spot, target and evaluate
- Actuarial analysis
- Prevention screening reminders for attributed patients
- Care management systems
- Connect beneficiaries to community services

Prevention for a Healthier America: Financial Return on Investment?

INVESTMENT:	\$10 per person per year
HEATH CARE COST NET SAVINGS:	\$16 Billion annually within 5 years
RETURN ON INVESTMENT (ROI):	\$5.60 for every \$1

Opportunities for Prevention Savings in Medicare and Medicaid

	Number of beneficiaries, 2012	Total spending, 2012	Percent of federal budget, 2012	Percent of state budgets, average, 2012	Medical spending linked with obesity, 2008	Medical spending linked with tobacco use, 2004
Medicare	50 million	\$591 billion	15%	N/A	8.5% of expenditures	\$27.4 billion
Medicaid	56 million	\$459 billion	8%	24%	11.8% of expenditures	\$30.9 billion

Prevention Partnerships

- **Omaha B-Cycle**
 - BC/BS NE, Live Well Omaha and Community Bike Project
- **Healthy Kids, Healthy Families** with HCSC (BC/BS in IL, NM, OK, TX)
- **CO Health Observation Regional Data Service**
 - KP CO, Denver Health, CO Children's Hospital, National Jewish Health, U. of CO
 - Distributed research network to monitor disparities, beginning with BMI

Prevention Partnerships

▣ MN Partnership on Pediatric Obesity Care and Coverage

- MN AAP and MN Council of Health Plans
- Evaluating the efficacy of pediatric obesity services
- Identifying potential gaps in care and coverage
- Identifying referral pathways
- Developing data measures collaboratively

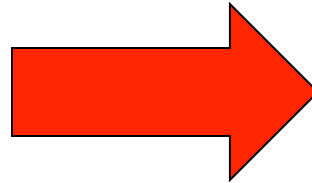
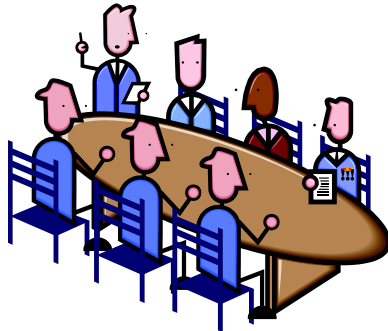
[http://www.mnaap.org/
obesitycoding.html#sthash.NyQwCo3e.dpuf](http://www.mnaap.org/obesitycoding.html#sthash.NyQwCo3e.dpuf)

Prevention Partnerships

- **Northern MI Diabetes Collaborative**
 - Priority Health, providers and community agencies
 - Media campaign, provider education, gestational diabetes, policy changes

- **HEALTHY Armstrong PA**
 - UPMC Health Plan, ACMH/ACMH Foundation, County government, schools, pediatric providers
 - Leveraged federal Dept. of Ed grant
 - CATCH, We Can!

How do **You** Partner to Improve Population Health?



Questions?

adebiasi@tfah.org

www.healthyamericans.org