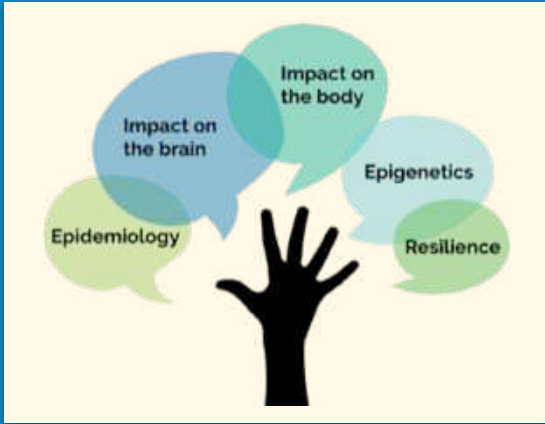




ACEs Connection

Creating a *much* better normal.





ACEs Science

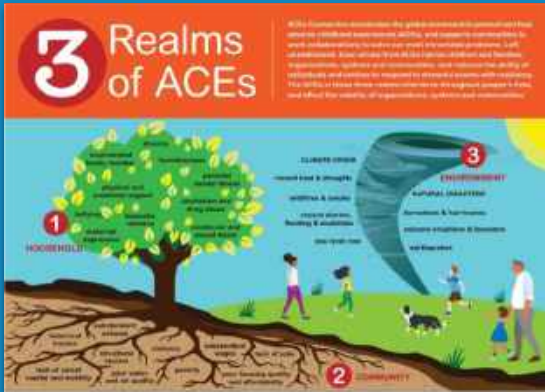
Epidemiology ACEs study and expanded ACE surveys.

Impact on the brain toxic stress caused by ACEs changes structure and function of brain.

Impact on the body health consequences of toxic stress (short & long term)

Epigenetics how toxic stress from ACEs is passed from generation to generation, aka historical trauma.

Resilience brain and body can heal with healthy relationships, healthy organizations, healthy systems, and healthy communities.



3 Realms of ACEs

Adverse childhood and community experiences (ACEs) can occur in the household, the community, or in the environment and cause toxic stress. Left unaddressed, toxic stress from ACEs harms children and families, organizations, systems and communities, and reduces the ability of individuals and entities to respond to stressful events with resiliency. Research has shown that there are many ways to reduce and heal from toxic stress and build healthy, caring communities.



Thanks to Building Community Resilience Collaborative and Networks and the International Transformational Resilience Coalition for inspiration and guidance. Please visit [ACESConnection.com](https://www.acesconnection.com) to learn more about the science of ACEs and join the movement to prevent ACEs, heal trauma and build resilience.



ACEs Connection

**Supporting communities
to accelerate the use of
ACEs science...to solve our
most intractable problems.**



WHO WE ARE

**The social network
for the ACEs movement.**

46,000+
MEMBERS (AND GROWING)

**...who share best practices
based on ACEs science.**

**ACEs
Connection**

A close-up photograph of a person's hands holding a small green seedling with soil. The person is wearing a grey t-shirt. The background is dark and out of focus.

WHAT WE DO

Connect with support.

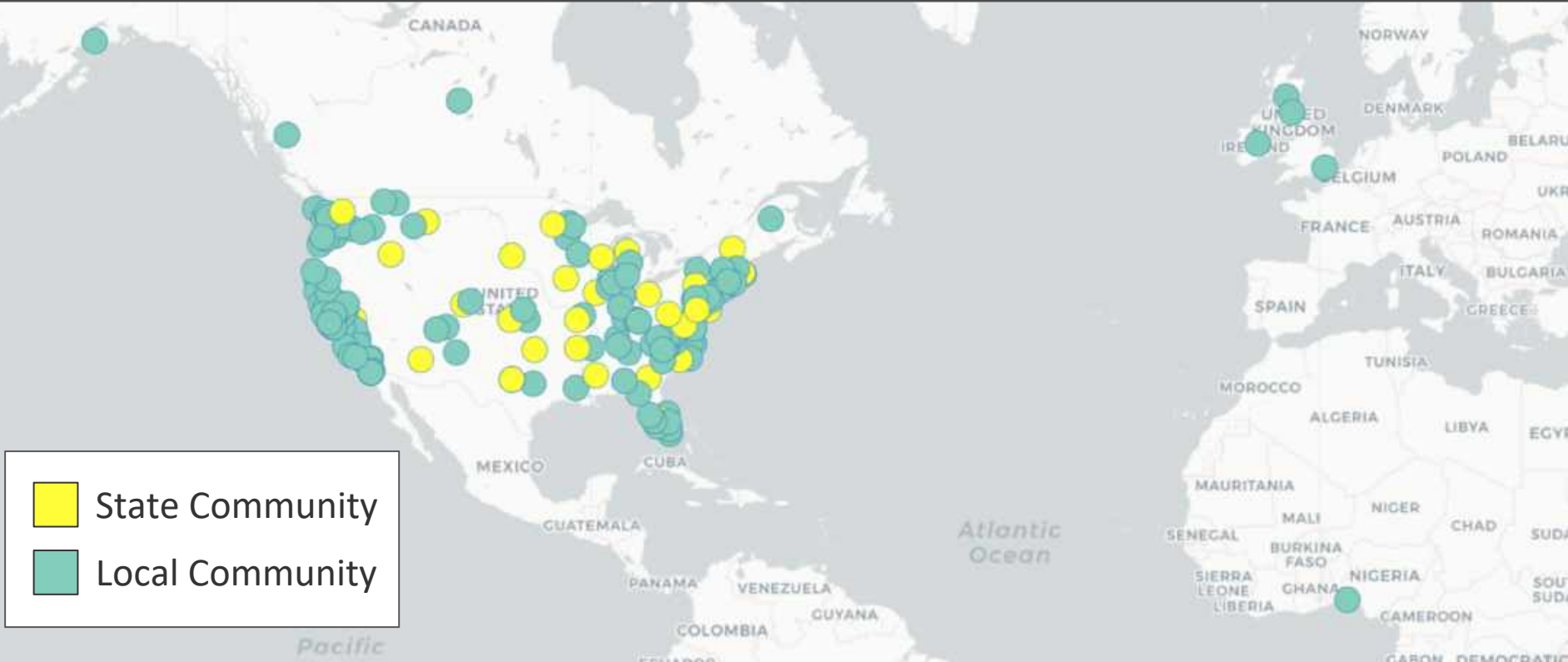
We support community ACEs initiatives to create solution-oriented systems.

300+

CITIES, COUNTRIES & STATES

...use free community site, tools,
guidelines on ACEs Connection

ACEs Communities



WHAT WE DO

Connect with information.

Connect with news. Connect with story.



***Addiction doc:
It's not the drugs. It's the ACEs.***



***Integrating ACEs?
Staff first, THEN patients***



***Alaska natives now center of
state ACEs movement***



***US House committee sees ACEs
in own members***

- Weekly Roundup & Daily Digest
- Resources Center
- Ask the Community

Health advocates highlight extreme COVID burnout, stark inequities and strong call for action



LAURIE UDESKY (ACES CONNECTION STAFF) 9/2/20 @ 3:06 PM



Post

- [Add Comment](#)
- [Manage Blog Post](#)
- [Configure Blog](#)
- [Leave Community](#)

MANAGE WIDGETS ON BLOG PAGES

Blog Directory

- › [Blog Posts - Welcome to ACEs in Pediatrics](#)
- › [Blog Posts -- Advocacy](#)
- › [Blog Posts -- Legislation & Policies](#)
- › [Blog Posts -- Research & Reports](#)
- › [Blog Posts -- Solution Stories](#)
- › [Funding](#)
- › [Resource List -- ACEs Screening](#)
- › [Resource List -- Advocacy](#)
- › [Resource List -- Articles on practices integrating ACEs](#)


VIDEO

Ep. 27 Education Upended Part IX [A Better Normal Series]

JENNA QUINN (ACES CONNECTION STAFF) ○ 6/19/20 @ 7:13 AM

Post

 Add Comment

 Manage Resources & Videos

 Configure Media

MANAGE WIDGETS ON RESOURCE PAGES



Ep. 27 Education Upended Part IX [A Better Norm...  

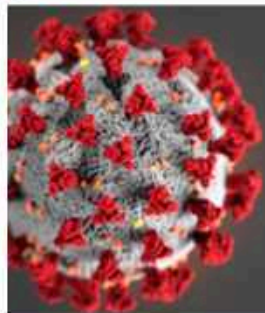
A grid of 20 video thumbnails from a Zoom meeting. The thumbnails show various participants in different settings, including home offices, bedrooms, and living rooms. Some thumbnails have names or avatars overlaid, such as "JAC CAUSSE" and "JAC CAUSSE".

MORE VIDEOS

  25:59 / 55:15   YouTube 

ACEs in Education & COVID-19

 LARA KAIN (ACES CONNECTION STAFF)  4/7/20  1:23 PM 



ACEs in Education in a pandemic.

Welcome to the COVID-19 and ACEs Science Collections for Educators!

We have four topic-specific resource lists related to COVID-19 and ACEs Science.

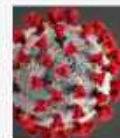
All four will be updated for as long as this pandemic lasts. They are as follows:

- ACEs in Education & COVID-19
- COVID-19 Resources for Healthcare Providers
- Parenting with ACEs in a Pandemic
- Practicing Resilience During Social Distancing

Post

-  Add Comment
-  Manage Blog Post
-  Configure Blog
-  Leave Community

MANAGE WIDGETS ON BLOG PAGES



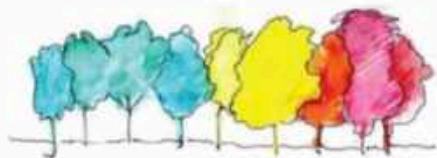
ACEs Connection COVID-19 Resources

- › ACEs in Education & COVID-19
- › Parenting with ACEs in a Pandemic
- › Practicing Resilience During Social Distancing
- › Providing Healthcare in a Pandemic



Request a Training or Workshop Today!

[Click here for more information.](#)



Greater Richmond Trauma-Informed Community Network

Dedicated to supporting & advocating for trauma-informed care for all children & families in the Greater Richmond area

[What is the GRTICN?](#)

Greater Richmond Trauma Informed Community Network, first to join ACEs Cooperative of Communities, shows what it means to ROCK!

RESOURCES AND SUPPORT DURING COVID-19

[Visit our webpage for resources and support here.](#)

RESILIENCE WEEK VIRGINIA 2020

Resilience Week Virginia is the first annual state-wide collaboration between Virginia's Trauma-Informed Community Networks (TICNs) to bring resilience-building activities and events to ALL Virginians. Visit the Resilience Week website for resources, events, and more!

informed care for all children and families in the City of Richmond and surrounding counties.

[INVITE OTHERS TO THIS SUBGROUP](#) →

ACES CONNECTION HOW-TOS

Directions on how to RECEIVE FEWER EMAILS, post a blog, calendar event, comment, etc.

GROWING RESILIENT COMMUNITIES



ACEs science is a social justice issue.

Parents have the right to know the most powerful determinant of their children's future health, safety and productivity.



**Moving from
blame, shame
& punishment...**



1. We weren't born bad.
2. We weren't responsible for the things that happened to us when we were children.
3. We coped appropriately, given that we were offered no other ways to cope; it kept us alive.
4. We can change.





ACEs Connection

Creating a *much* better normal.



Resources



- **ACEs 101** – FAQs about adverse childhood experiences research with links to reports, stories and videos.
 - **Got Your ACE Score?** – Do your ACE score and your resilience score, and find out more about the consequences of each.
 - **ACEsConnection.com** – A social network for people who are implementing – or thinking about implementing – trauma-informed and resilience-building practices based on ACEs research.
 - **ACEsConnectionInfo.com** — This is ACEs Connection’s “brochure” site. It provides an overview, mission, history, and staff profiles.
-
- **The CDC-Kaiser Permanente ACE Study** – The official ACE Study site, provided by the CDC.
 - **The Center on the Developing Child at Harvard University** – Here, take a deep dive into a site rich with reports, tools and videos about the neurobiology of toxic stress and resilience.
 - **SAMHSA’s Concept of Trauma and Guidance for a Trauma-Informed Approach** – Introduces a concept of trauma and offers a framework for how an organization, system, or service sector can become trauma-informed. Includes a definition of trauma (the three "E's"), a definition of a trauma-informed approach (the four "R's"), 6 key principles, and 10 implementation domains.